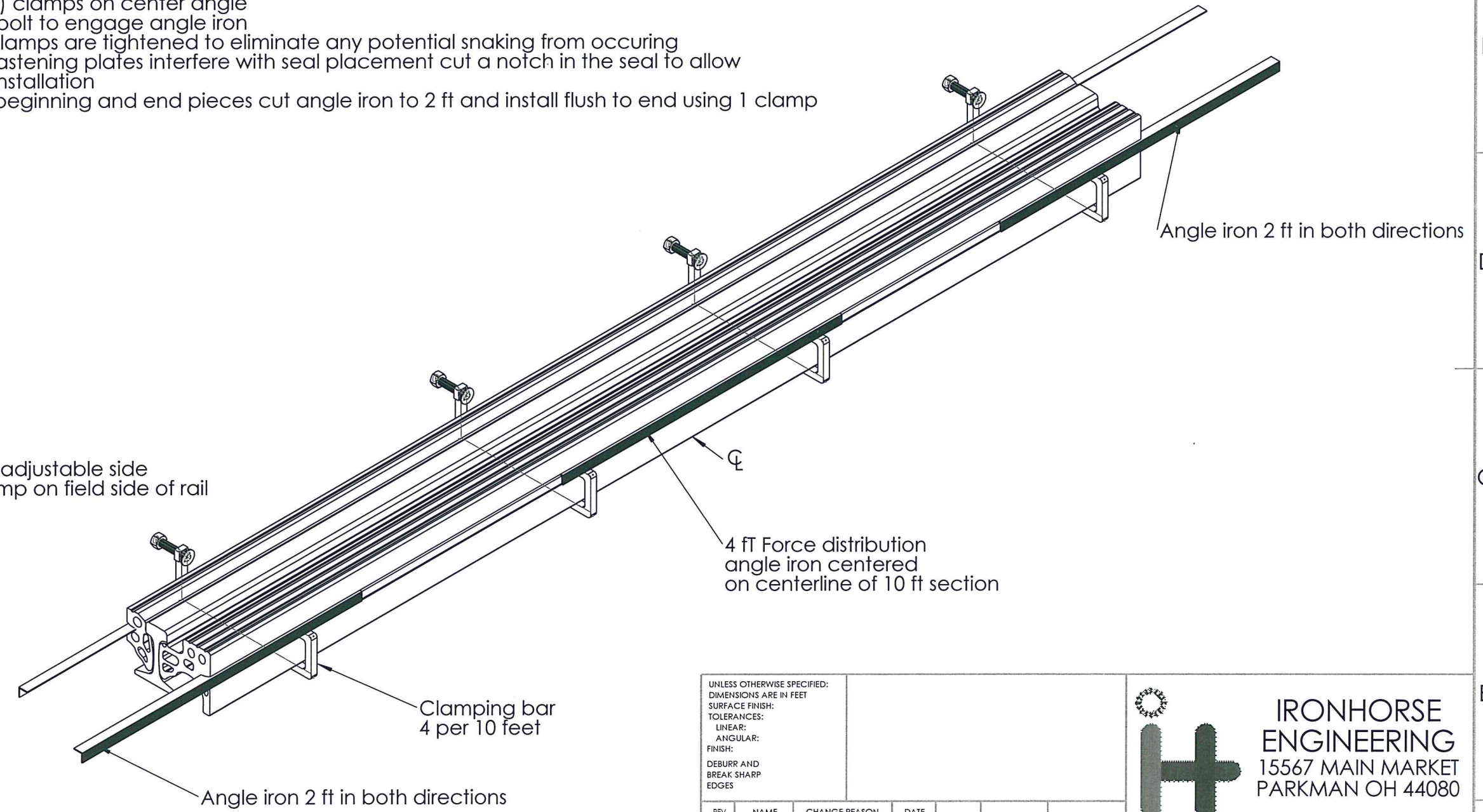


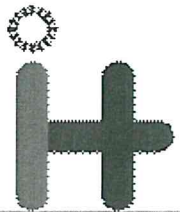
Rail Seal Clamping Instructions
for Iron Horse Rail Seal all profiles

1. Insert (3) 4ft angle irons into slot on outside edge of rail seal both field and gauge sides
2. On ends to be joined allow 2 feet of contact on each piece
3. Place center angle iron on center of 10 ft section
4. Slide clamp bars flat under the rail and rotate upwards
5. Place (1) clamp approximately (based on tie placement) 1 foot from each end of seal
6. Place (2) clamps on center angle
7. Tighten bolt to engage angle iron
8. Ensure clamps are tightened to eliminate any potential snaking from occurring
9. Where fastening plates interfere with seal placement cut a notch in the seal to allow proper installation
10. On the beginning and end pieces cut angle iron to 2 ft and install flush to end using 1 clamp



UNLESS OTHERWISE SPECIFIED:
DIMENSIONS ARE IN FEET
SURFACE FINISH:
TOLERANCES:
LINEAR:
ANGULAR:
FINISH:
DEBURR AND
BREAK SHARP
EDGES

REV	NAME	CHANGE REASON	DATE		
0	NJC	ORIGINAL	09/28/16		


IRONHORSE ENGINEERING
 15567 MAIN MARKET
 PARKMAN OH 44080

TITLE: **RAIL SEAL INSTALL INSTRUCTIONS**
 DWG NO. **33.001** REV **0**
 SCALE 1:10 SHEET 1 OF 1